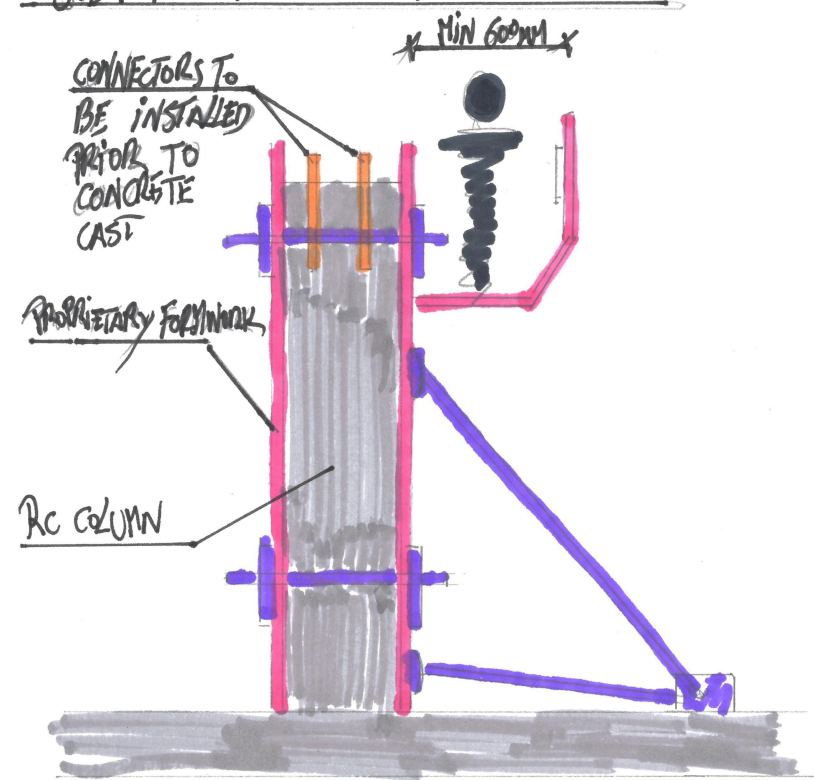


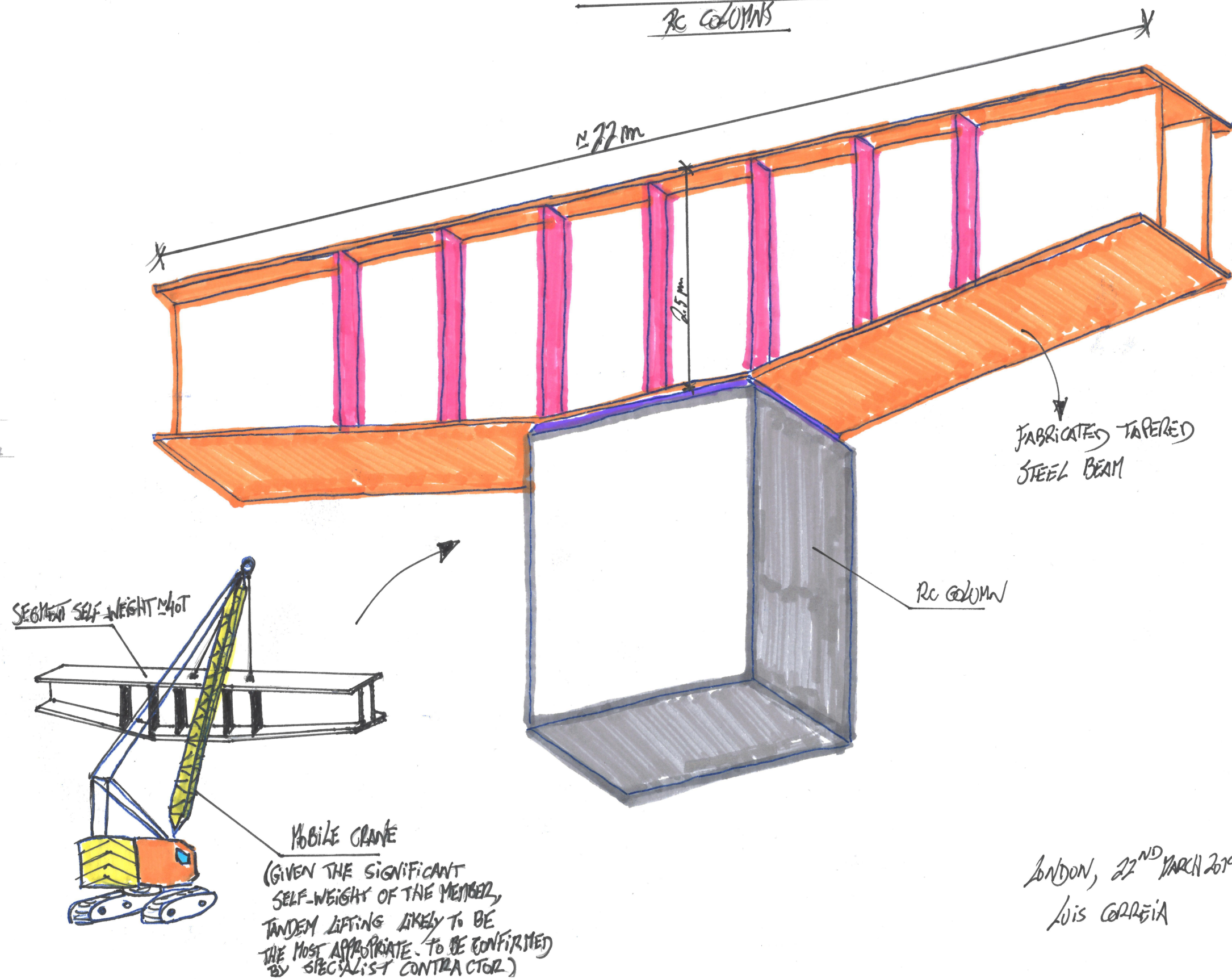
4244 - GHANA NATIONAL CATHEDRAL

TAPERED STEEL BEAMS CONSTRUCTION SEQUENCE

STEP 1 - FORMING RC COLUMNS



STEP 2 - INSTALL DEEPER TAPERED BEAM SEGMENTS ONTO RC COLUMNS



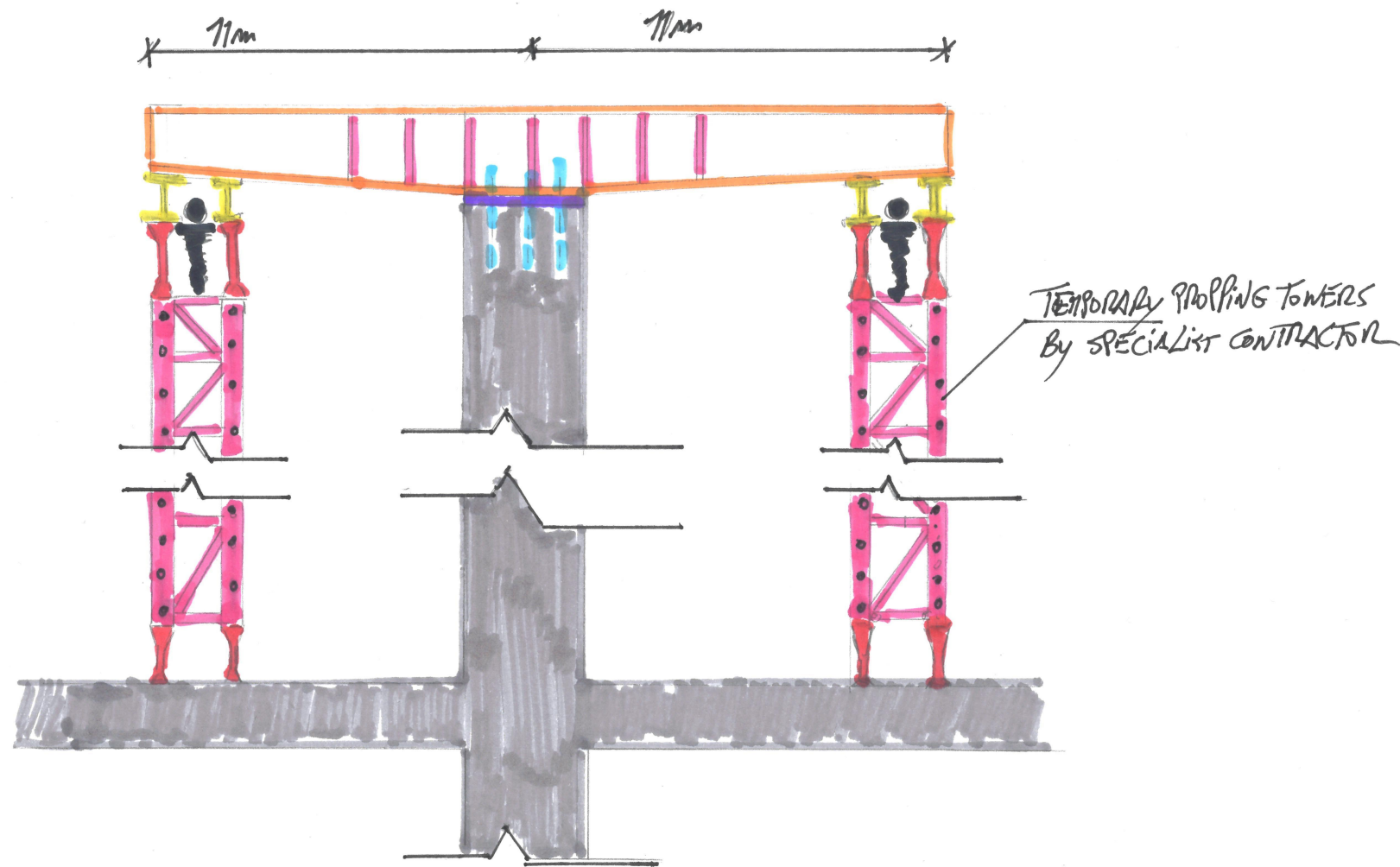
LONDON, 22ND MARCH 2019
Luis CORREIA

AKT II

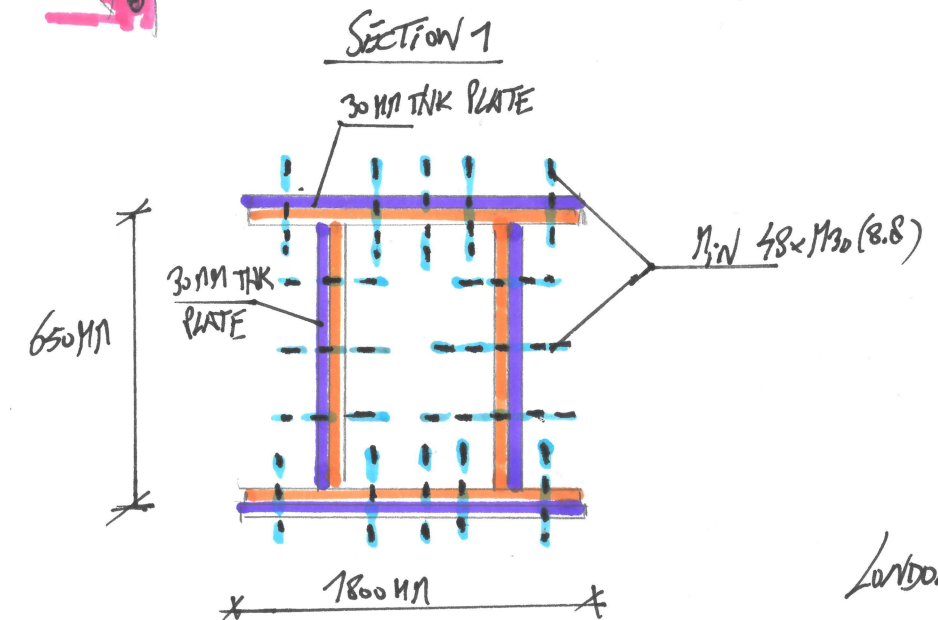
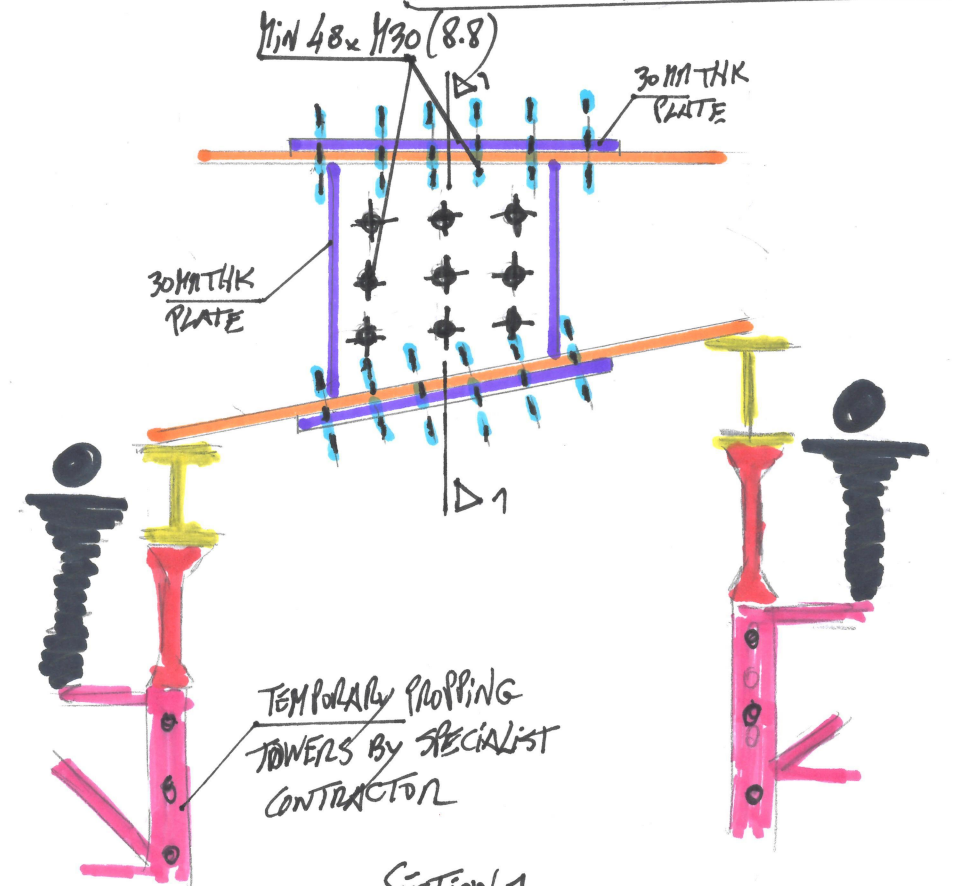
4244 - GHANA NATIONAL CATHEDRAL

TAPERED STEEL BEAMS CONSTRUCTION SEQUENCE

STEP 3 - INSTALL PROPPING TOWERS



STEP 4 - INSTALL REMAINING TAPERED BEAMS SEGMENTS AT THE SLICES LOCATIONS



LONDON, 22ND MARCH 2019
Luis CARREIA