

## 2026–2030 strategy

**Building the future together:**  
A strategic blueprint for  
innovation, transformation  
and excellence



## Contents

CEO introduction	3
What is the Institution of Structural Engineers	4
Building the future together: Our journey to 2030	5
Mission, vision and values	6
Strategic pillars	7
Achieving the strategy	8
Key impact areas	9
Summary	11

## Introduction

Welcome to our strategy for 2026–2030. It marks an important milestone for IStructE and it will guide our direction of travel over the next five years. Shaped by extensive engagement, this strategy provides a clear and unified direction for the years ahead.

We call it *Building the Future Together: A Strategic Blueprint for Innovation, Transformation, and Excellence*.

Our new strategic direction is the culmination of views and experiences gathered from our regional groups and wider membership across the world. I am grateful to the Board, Council, and everyone who contributed to shaping this next chapter for the Institution. Your insights have been central to defining our priorities and our goals.

Our legacy stretches back to 1908. Over more than a century, the Institution has led the advancement of the art and science of structural engineering. As we approach our 120th anniversary in 2028, we will continue to champion excellence, safety, and sustainability across the profession.

So, our new strategy not only reflects who we are today, but also responds to the environment in which we operate. In a complex world that is rapidly evolving and bringing with it new challenges, opportunities, and expectations,

we are committed to achieving our ambitions together. Therefore, this strategy has been designed to sharpen our focus on what matters most and clarifies our priorities to ensure that we are constantly aligning our efforts around a shared purpose.

The new vision statement articulates our aspiration, and this is not just a statement of our intent. Our new strategy translates this vision into action through clear goals and objectives that support progress at every level of the Institution. It emphasizes accountability, collaboration, and adaptability, ensuring we are anticipating and leading change.

At its heart, this strategy sets out how we will deliver meaningful outcomes by advancing structural engineering and delivering value for our members. We will ensure our members have



the knowledge and skills that set them apart as experts in their field. Through rigorous assessment and a commitment to lifelong learning, our qualification will remain the global benchmark for competence and professional excellence. In doing so, we aim to grow the Institution's global influence and future-proof the Institution for public benefit.

We are a global community and each of us has a role to play in bringing this strategy to life and shaping the future of structural engineering. Using this strategy as a blueprint for innovation, transformation, and excellence, let us build the future of the Institution together.

**Yasmin Becker**  
Chief Executive

# What is the Institution of Structural Engineers?

We are a global membership body representing more than 30,000 structural engineers. As a charity with a Royal Charter and as a Learned Society, we exist to advance structural engineering for the benefit of society.

We uphold standards, share knowledge, promote the public value of structural engineering, and provide a voice for the profession all across the world.

We provide a respected and independent voice for the profession, working with governments, industry partners, and educators to influence policy, raise standards, and champion excellence.

We have a steadfast commitment to treat sustainability and the climate emergency with equal importance to life safety.

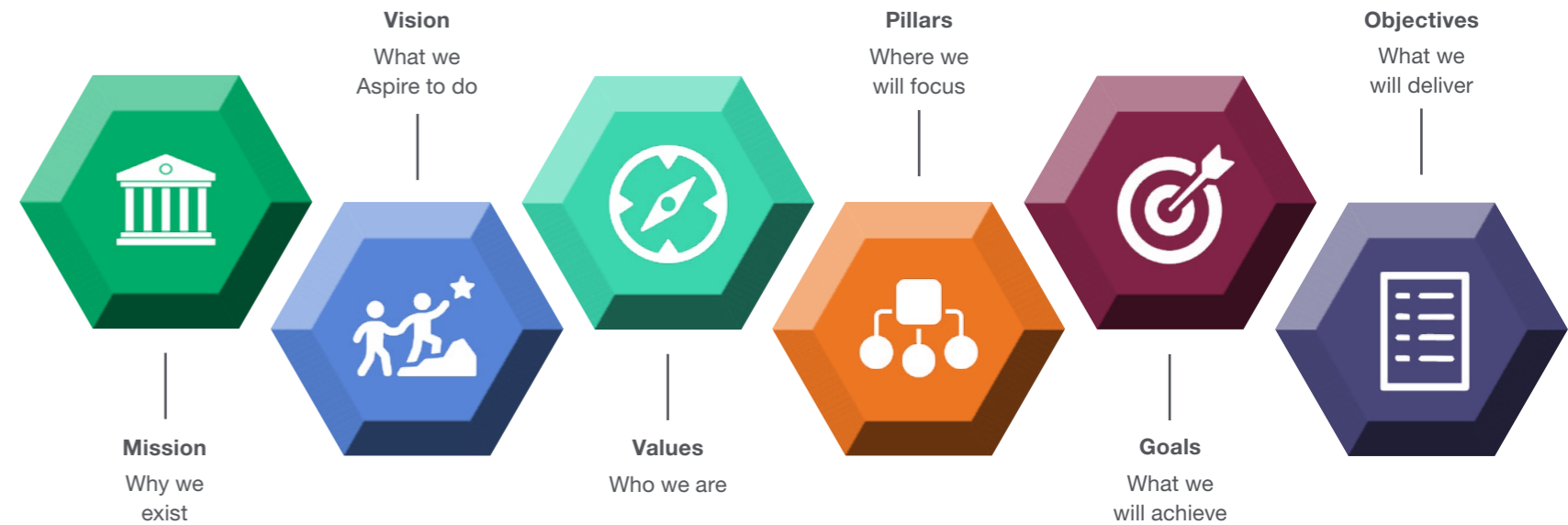
**“to promote for the public benefit the general advancement of the science and art of structural engineering in any or all of its branches and to facilitate the exchange of information and ideas relating to structural engineering amongst members of the Institution and otherwise.”**

**Royal Charter objects**

# Building the future together: Our journey to 2030

Our new strategy has been designed to enhance member value, grow the Institution’s influence, and future-proof the Institution on behalf of its members for public benefit. Through this strategy, the Institution positions itself to innovate and to lead with confidence in a volatile and complex global environment.

## Our strategic framework



## Our mission with a purpose:

Rooted in our Royal Charter objects, our new mission statement captures the purpose that drives everything we do on our journey to 2030.

“To secure a safe and sustainable world by advancing structural engineering, raising professional standards, and sharing knowledge.”

## Our vision for the future:

Our new vision statement outlines our aspiration for the Institution’s future and guides what we want to achieve in the next five years.

“To lead and develop an engaged global community of structural experts who are inspired to innovate, collaborate and create a safe and sustainable built environment.”

## Our Institution values

We are guided by values that define who we are and how we work.

- Integrity** We uphold the highest standards of ethics and professionalism in everything we do.
- Excellence** We pursue continuous improvement and the advancement of technical knowledge.
- Collaboration** We work together across our global communities to share insight and build understanding.
- Inclusion** We value diversity and ensure that every voice has the opportunity to contribute.

## Strategic pillars

Our strategy for 2026-2030 is built around interlinked pillars aligned to our core purpose.

**1. Advancing Profession:** centered on thought leadership, growing influence, and sharing our expertise to advance structural engineering practice worldwide.

**2. Supporting Professionals:** focused on supporting and developing members throughout their careers, through mentorship, inclusion and continued professional development.

**3. Enhancing Professionalism:** fulfilling our mission to serve the public benefit by promoting safety, sustainability, and ethical practice across the built environment.


**4. Building Organisational Resilience:** strengthening our ability to anticipate change, respond effectively to disruption, and continue delivering on our purpose in an uncertain world.



**Profession**

**Thought leadership and expertise**

As a learned society we advance the art and science of structural engineering and foster a culture of continuous learning

**Professionalism**

**Members and membership**

As a professional body, we support and connect members across the world through every stage of their professional journey.

**Professionalism**

**Standards and ethics**

As a charity, we act in the public interest by promoting safe, sustainable, and resilient structures.

**Organisation**

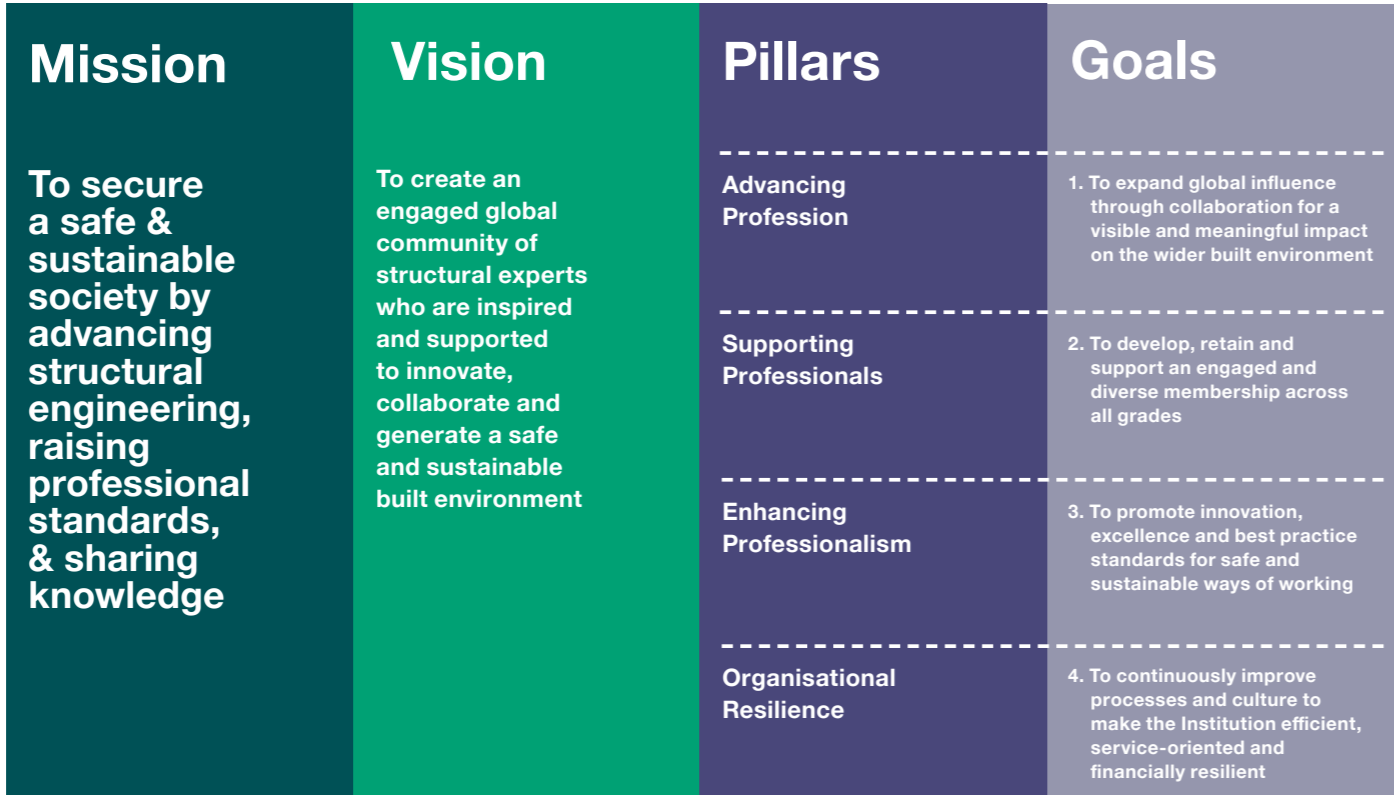
**Efficient and resilient**

As an organisation, we strive for excellence in governance, operations, and financial stewardship by adopting scalable operating models and a culture of continuous learning.

# Achieving the strategy

Our strategy is defined through four interconnected pillars that guide our actions and define our impact. Each pillar focuses on a priority area which is further supported by specific goals and objectives that turn our strategic ambition into measurable outcomes.

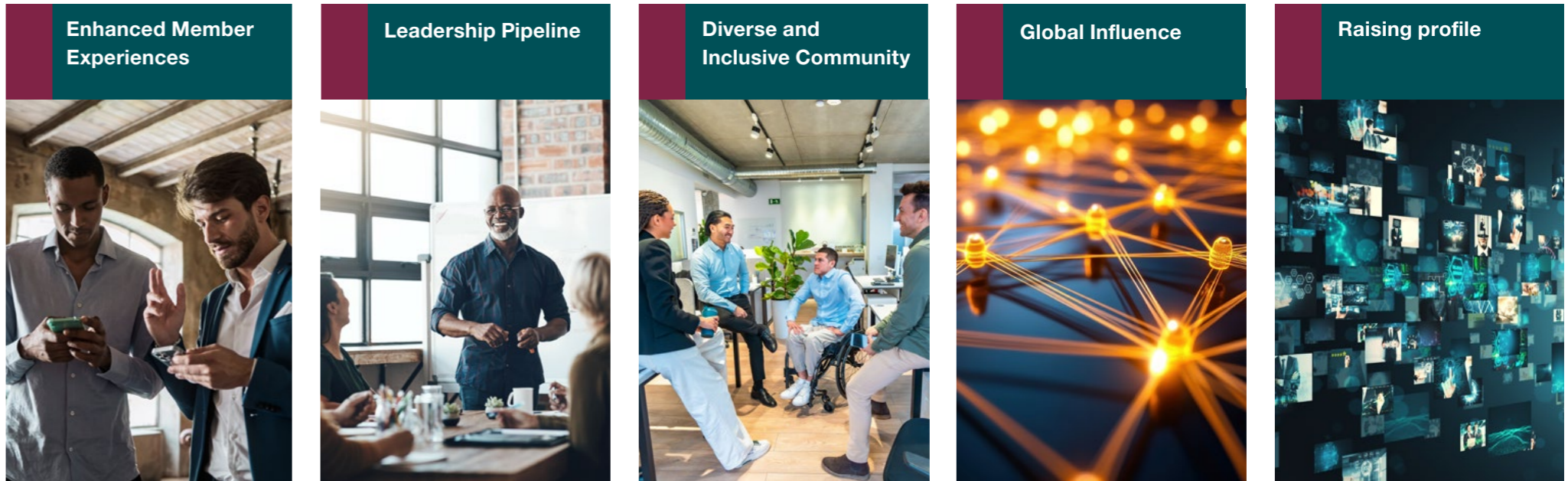
Together, they ensure the institution continues to grow its influence, support and develop members, promote excellence and uphold professional standards, while improving how we work as an organisation.



# Key impact areas

We embrace the challenge of change, viewing it as an opportunity to evolve how we work. Innovation and digital transformation are key enablers of our strategy.

This strategic journey will have positive impact on the following areas:





## Summary

This is a cohesive strategy that has been created collaboratively with our members. Our Board, Council, regional groups, wider membership, staff and stakeholders all have a role to play in achieving this strategy.

Working together, this strategy will enable us to shape the future of structural engineering. In doing so, it will:

- Grow the relevance of the role of IStructE on the global stage
- Shape the future of the profession and the pipeline of new entrants to the profession
- Maintain and grow trust in the profession by upholding the professional conduct of our members

It builds on the Institution's illustrious past, creating a new trajectory that places our members at the heart of all our activities for the benefit of the public.

The Institution of  
**StructuralEngineers**

---

The Institution of Structural Engineers  
International HQ  
47-58 Bastwick Street  
London, EC1V 3PS  
United Kingdom

---

T: +44 (0)20 7235 4535  
E: [mail@istructe.org](mailto:mail@istructe.org)  
W: [www.istructe.org](http://www.istructe.org)

---

Registered with the Charity Commission  
for England and Wales No. 233392 and in  
Scotland No. SC038263

